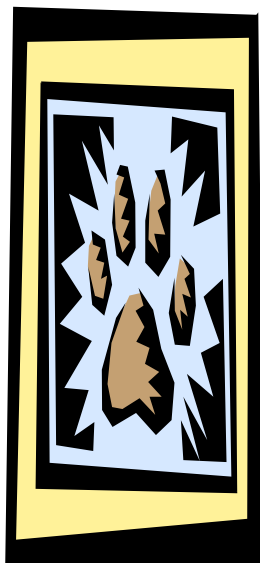


**Landmark
Middle School**
5730 W. Myrtle
Ave.
Glendale AZ 85301
623-237-4102

Mrs. Stillman,
Principal

**Mrs.
Emerson,**
Asst. Principal



Principal's Message

This month I wanted to tell you about the parent and teacher organization called Site Council. Site Council is a group that focuses on school improvement. It is made up of the Principal, Assistant Principal, the Administrative Secretary, the Team Leaders and parents.

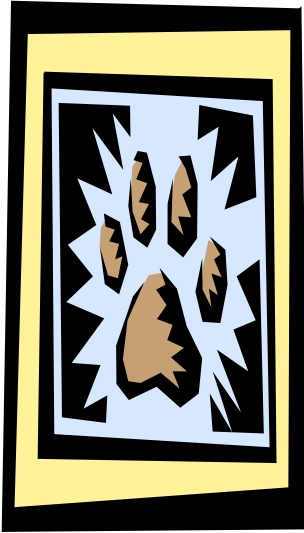
Team leaders are teachers who are chosen to represent their grade levels and are paid a small stipend to take on leadership responsibilities for the school. There are 6 Team Leaders at Landmark this year: Dennis Micelli represents Kindergarten and 1st grade, Pam Scott represents 2nd and 3rd grade, Amanda Jacobs represents 4th and 5th grade, Lori Babcock represents 6th through 8th grade, Patty Moran represents Special education, and Elizabeth Buchanan represents special areas.

Our parent members include: Laurie Newman, Lea Mackey, Mike & Mary Guebara, Becky Brown, and Fabiola Calderon. It is very exciting to have such a great group this year.

The group has set two goals to work on that align with our school and district goals for improvement. One aligns to our reading goal. The site council is going to work on getting more books into our library and improving resources for students.

The second goal is to improve parent participation and community involvement. The site council is going to set up a volunteer bulletin board in the front office and provide on-site finger printing for parents who want to volunteer in the classroom, go on field trips, and help at the school. We are also working on other ways to make parents feel more welcome into our school community as we know how vitally important parents are for the success of student learning. If you would like to join site council, our next meeting is **Tuesday, November 30 at 6:00 pm in Room B 135**. We will provide translation and babysitting if you need these services.





Parent-Teacher Association (PTA)

Hip, Hip, Hooray! Landmark Elementary School has a PTA!

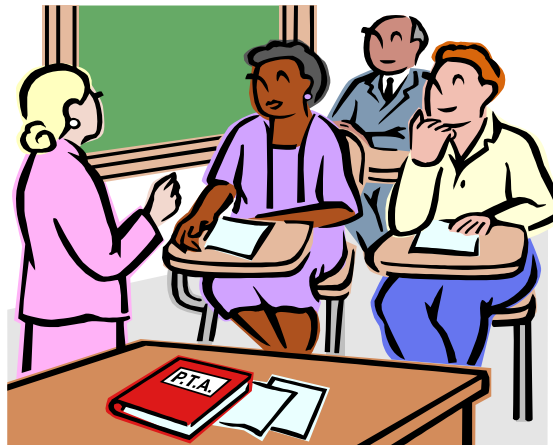
We are *extremely* excited to announce that Landmark Elementary School *officially* now has a PTA (Parent-Teacher Association). You may be asking yourself, "What is PTA?" The National Parent Teacher Association® (PTA®) comprises millions of families, students, teachers, administrators, and business and community leaders devoted to the educational success of children and the promotion of family engagement in schools. PTA is a registered 501(c)(3) nonprofit association that prides itself on being a powerful voice for all children, a relevant resource for families and communities, and a strong advocate for public education. Membership in PTA is open to anyone who wants to be involved and make a difference for the education, health, and welfare of children and youth.

Research shows that students do better when their families are involved both at home and at school. Grades are higher. Test scores rise. Self-esteem grows. Schools improve. Here are a few more great reasons to be a part of PTA:

1. Be in the know - Keep up with what's happening in your school and how you can support your child's education.
2. Access great resources - information on topics ranging from homework help to bullying prevention to media safety to child health and more are all available from PTA.
3. Build relationships - connect with the school's families through meetings, events, and communications, and helps build a sense of community.
4. Hone your skills - use your talents to benefit children and the school.
5. Speak up - effectively suggest changes at your child's school and in your community, and be involved in making them happen.

Join PTA Today!

Everyone is invited to join PTA: moms, dads, teachers, principals, students, aunts, uncles, grandparents, caregivers, businesspeople, advocates, community members. Membership is **only \$5.00** for the whole family!! Meetings will be held the second Tuesday of each month at 6:30 p.m. The next meeting will be Tuesday, November 9th. Look for the membership form attached with this newsletter.



A Word from Your Prevention Specialist

Well this month has been exciting. I have been going into classes and doing lessons on empathy. Empathy is the ability for a person to put themselves in another's situation and relate on an emotional level. When a person is capable of empathy it creates the need to take action in order to help. Research has shown an increase in people's lack of empathy. Because of this we see an increase in acts of violence toward each other, and a lack of response when we see someone in need. I see this all the time here at Landmark. People see someone get hurt either by accident or on purpose and either look the other way or laugh. People look to create conflict and drama. There seems to be an underlying belief that to show caring is a sign of weakness. Also many of the shows you allow your children watch on TV models

behaviors lacking in empathy and filled with anger, violence, and negative interactions with others. I see these behaviors modeled in so called "reality" shows being played out here at school and in our neighborhoods. My goal is to try to teach what used to be expected and come naturally, caring for your fellow person. Parents you need to take a lead in this. Be more selective about what you allow your children to watch on TV. Talk to your children about the concept of empathy and try to provide opportunities for them to practice it. Next month I will be discussing feelings and anger.

October 25-29 was Red Ribbon Week. This is a national event that focuses on letting our students know about drug abuse. We had every student come out

and tie a red ribbon on our fence to let everyone know that at Landmark we celebrate a drug free lifestyle.

Students decorated their class doors with anti-drug slogans, and we had a contest to see who had the best door. Students also signed pledge cards stating that they will take a stand against tobacco, alcohol, and drug abuse.

Drug usage has made its way into our elementary grades nationwide. With true information our students can make better choices when faced with the opportunity to use. And they all will face this at some time. Please have frequent talks with your children about the importance of staying drug free.

Parents

Parent involvement is critical to every child's school "career", and how they will grow and be prepared to thrive as an adult.

But being involved doesn't mean doing their homework for them. It means supporting the school's goals by creating a school-smart home, encouraging positive behavior, and effectively coaching children in academics.

It means joining your

child's educational team.

That's why we are offering an exciting video and discussion program on parent involvement called ***Parents on Board, Building Academic and Lifelong Success through Parent Involvement.***

This program will be lead by our Prevention Specialist. Lloyd Sirkin, and will teach parents how to create a school-smart home by:

- Establishing a working relationship with the school
- Using effective discipline and encouragement
- Promoting attitudes that build success
- Coaching your child in reading, writing, spelling, math and science (without being an expert!)

So, come meet other parents, share some common questions and concerns, and learn how to help your child find academic and lifelong success. Our next meeting will be December 3rd, 8:00 AM along with Coffee with the Principal.



6th, 7th, & 8th

"Students seem to be very excited for the upcoming experiments and we plan to challenge their minds with higher level material."



"Your child's success is very important to us..."

The middle school grades have been extremely busy and productive throughout the month of October.

In the reading classes, students are reviewing the stages of plot and will begin working with multiple themes in prose/poetry.

Poetry will be an exciting unit because students will get to display their creative side through original poems and a poetry book! Also, the 7th and 8th graders have focused on text features and main idea within informational text.

Students are learning how to read functional text, which will apply to their everyday lives. Each student will take their second reading benchmark in mid November and will be hard at work preparing for that as well.

In writing, students have been working on grammar and word choice. Students will be creating their writer's notebooks. These notebooks will allow students to really begin

strengthening their writing skills and use of the 6 traits, and the notebooks will act as a portfolio for their drafts and ideas so the students can look back on their writing and growth as the year progresses. Also, the students have been focusing on RAFTS and will be writing persuasive letters in the next few weeks.

The math classes have been hard at work as well. Students received their benchmark scores back and are now focused on graphical displays, mean, median, mode, and range. Everyone is also continuing to practice their multiplication and division at home. Furthermore, students are learning about scatter plots, bar graphs, multi-line graphs and random sampling. The following weeks will be heavily focused on permutations, probability, and combinations.

In Social studies, the classes finished causes

of the Civil War and are now studying the war itself. The class will be focused on campaigns and battles. Students are also learning about the ancient civilizations and exploring the culture and customs from that time.

Finally, in science, the students have completed our studies of Astronomy and are moving on to Earth Science. During Earth Science, students will investigate how our planet formed, what the different layers of Earth are, and how changes that occur inside Earth's interior cause drastic changes to our exterior. Students will also be participating in a number of experiments that will bring real world situations to the classroom.

Students seem to be very excited for the upcoming experiments and we plan to challenge their minds with higher level material. Lastly, students will be learning about the atmosphere and weather in the upcoming months.

Red Ribbon Week

Red Ribbon Week is a national campaign that encourages children to say “NO” to drugs and alcohol. Every day of Red Ribbon Week we had an activity or theme for students to participate in. Students have socked it to drugs and worn crazy socks. They have turned their backs on drugs and worn their clothes inside out. They have signed pledge cards to say no to substance abuse and have tied red ribbons on our fence. We have also had a door decorating contest for classes to show their school spirit and understanding of the Red Ribbon Campaign. We have had some wonderful displays of creativity and craftsmanship. Mr. Micelli’s Kindergarten took the prize for the K-1 category. Ms. Gath’s class took the prize for the 2-4 grade category and Ms. Hutson’s class took the prize for the 5-8 category.



Student of Month

Students are nominated each month by their teachers using criteria based on student behavior that is aligned with the Six Pillars of Character.

Each month the students are honored with a breakfast ceremony, a certificate, and their names are entered into a drawing for a gift card.

Congratulations to the following students who were selected by their teacher to be the Landmark Middle School Student of the Month.

Alisa Trotter
Adolfo Diaz
Erick Silva
Judy Massillon
Carmen Valdez Ortega
Ailiyah Sustaita
Maleny Gutierrez Nuno
Mariyam Parwa
Angelica Fernandez Ortega
Noelia Alvarez
Billy Rood
Carlos Hernandez
Joseph Agilar
Raul Romero
Tyrell Patterson
Bruno Mendoza-Jimenez
Taqi Waham
Rosario Alvarez
Hunter Scott
Jesus Mendez
Andrea Hernandez
Vanessa Sanchez
Ai Si



The next Student of the Month breakfast will be held November 18th, 9:00 AM in the Media Center.

We're on the Web!

See us at:
www.gesd40.org

Calendar

Veteran’s Day –Holiday Break	November 11 th & 12 th	No School	
Student of the Month Breakfast	November 18 th	9:00 AM	Library
Early Release	November 19 th	11:45 AM	
Thanksgiving Break	November 22 nd – 26 th	No School	
Reach Out Dental	November 30 th	8:00 AM – 2:00 PM	
Site Council Meeting	November 30 th	6:00 PM	B135
Holiday Music Concert	December 2 nd	4:00 PM – 8:00 PM	
Coffee with the Principal	December 3 rd	8:00 AM	Cafeteria
Early Release	December 3 rd	11:45 AM	
Multicultural Night	December 10 th	5:00 PM	Campus wide
Early Release	December 10 th	11:45 PM	
Winter Break	December 20 th – 31 th	No School	

What’s New at Landmark?

Volunteer Board **Volunteer Services**

If you are interested in volunteering at Landmark, please check our volunteer board in the front office for volunteer opportunities and speak with our Volunteer Coordinator, Mrs. Rodriguez.

Suggestion/Comment Box

We have set up a suggestion/comment box in the front office; please let us know how we are doing. We will feature some of your questions with answers from the administrators and your comments here. The following are a few that we have received.

Question: *Since the painters are here, why can’t they paint a Hopscotch game & a 4-square game in the kindergarten playground?*

Answer: *The Hopscotch and 4-Square games are being painted on the playground at this time.*

Comment from a parent: *I would like to take this time to thank and praise all of your staff in the front office and all of your caring teachers.*

Landmark Sweatshirt Sale

Orders are now being taken for Landmark Sweatshirts. Parents or students may pre-pay by filling out the order form on the following page and including a check with your order. Students should turn in their order to their homeroom teacher. Available colors are navy or gray and sizes are from Youth XSmall – 3XL.

ORDER FORM LANDMARK ELEMENTARY

NAME: _____

Sizes:

Youth Sizes: YXS (4) YS(6-8) YM(10-12) YL(14-16) YXL(18-20)

Adult Sizes: Small, Medium, Large, Extra Large

Quantity	Item	Size	Price	Total
	Jerzees 996M Hooded Sweatshirt (Navy)		\$15.00	
	Jerzees 996M Hooded Sweatshirt (Grey)		\$15.00	
	Jerzees 993M Zip Sweatshirt w/hood		\$18.00	
			Total	

***This logo will appear on the front of the hooded sweatshirts and on the back of the zippers. The second logo will be used on the youth sizes. (logos are rough sketches and will be proportional on the sweatshirts.)



NOTE: Youth size XS is a Port Authority PC90.
 Cash is preferred.
 Make out checks to: STARTING LINEUP

